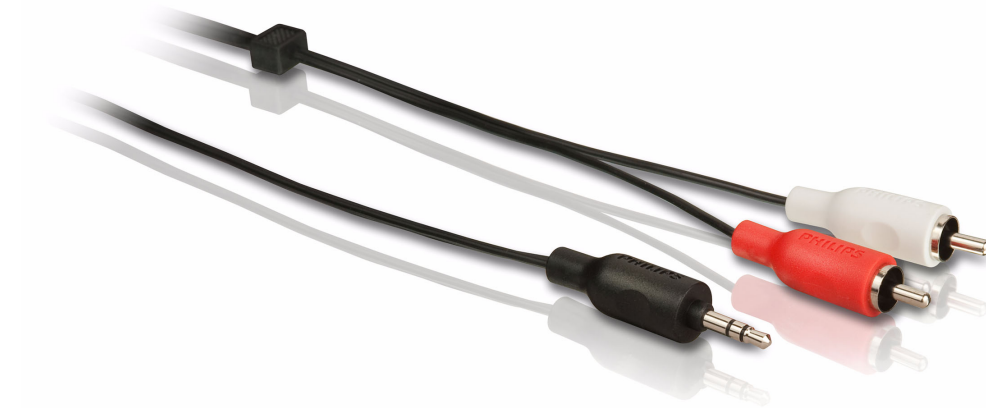


Philips
Stereo Y cable

1,5 m
3.5 mm(M) - 2 RCA(M)

SWA2527W



Ensure a reliable connection

with this stereo "Y" cable

Depend on this cable to provide you with a reliable audio connection between components.

Enjoy good audio quality

- High purity copper conductor for reliable signal transfer

Protects against signal loss

- Bare copper shielding

Easy installation

- Color coded connectors for instant recognition
- Non-slip ergonomic grip for easy use

Enjoy extended durability

- Molded plug for secure connections
- Flexible PVC jacket
- Rubber strain relief

PHILIPS

Stereo Y cable
1,5 m 3.5 mm(M) - 2 RCA(M)

Specifications

Packaging Data

- Quantity: 1
- EAN/UPC/GTIN: 87 10895 99459 0

Inner Carton

- EAN/UPC/GTIN: 87 10895 99840 6
- Quantity: 6
- Length: 245 mm
- Width: 150 mm
- Height: 105 mm
- Tare weight: 0.18 kg
- Gross weight: 0.42 kg
- Net weight: 0.24 kg

Outer Carton

- EAN/UPC/GTIN: 87 10895 99841 3

- Quantity: 36
- Length: 340 mm
- Width: 340 mm
- Height: 260 mm
- Gross weight: 3.06 kg
- Net weight: 1.44 kg
- Tare weight: 1.62 kg

Dimensions

- Product length: 23.5 cm
- Product dimensions (W x H): 95 x 22 mm
- Gross weight: 0.06 kg
- Net weight: 0.04 kg
- Tare weight: 0.02 kg

SWA2527W/10

Highlights

High purity copper

This copper conductor provides high accuracy in signal transfer with minimal resistance.

Bare copper shielding

Bare copper shielding protects against signal loss.

Color-coded connectors

Color coded connections make it easy to install your cable into the correct inputs and outputs

Easy grip

This non-slip grip makes connecting your components easy and ergonomically comfortable.

Molded plug

Molded plugs ensure secure connections between components and offer extended durability.

Flexible PVC Jacket

Flexible PVC jacket provided protection to the delicate core of the cable. It also offers extended durability and ease of installation.

Rubber strain relief

Rubber strain relief provides a secure, yet flexible juncture between the cable and the plug.



Issue date 2016-07-06

Version: 2.1.13

12 NC: 9082 100 09825
EAN: 87 10895 99459 0

© 2016 Koninklijke Philips N.V.
All Rights reserved.

Specifications are subject to change without notice.
Trademarks are the property of Koninklijke Philips N.V.
or their respective owners.

www.philips.com